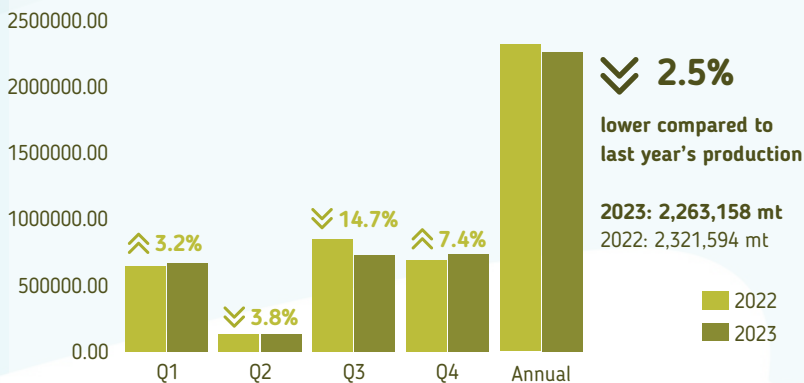
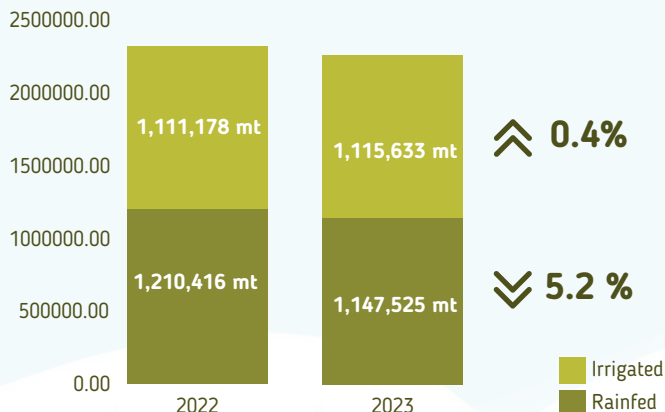


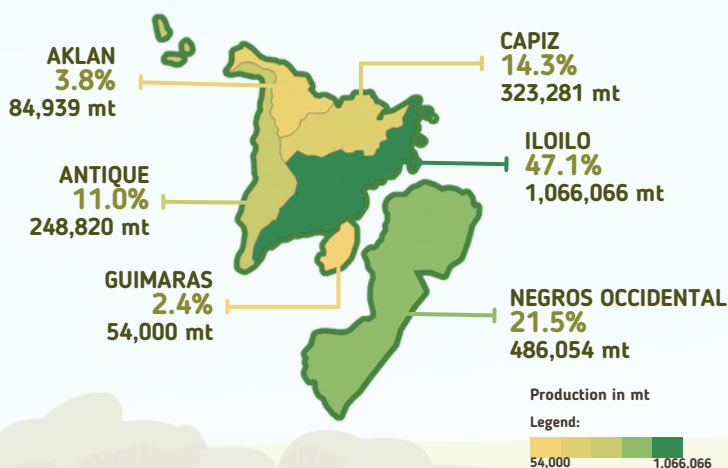
Volume of Production, by Quarter, 2022 to 2023



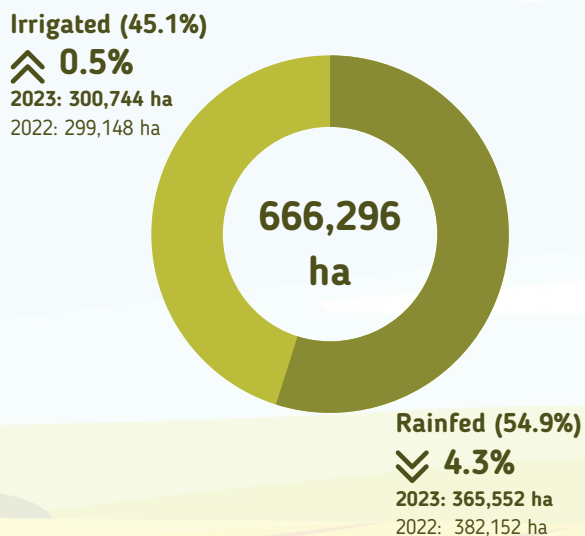
Total Volume of Production, by Type of Ecosystem, 2022 to 2023



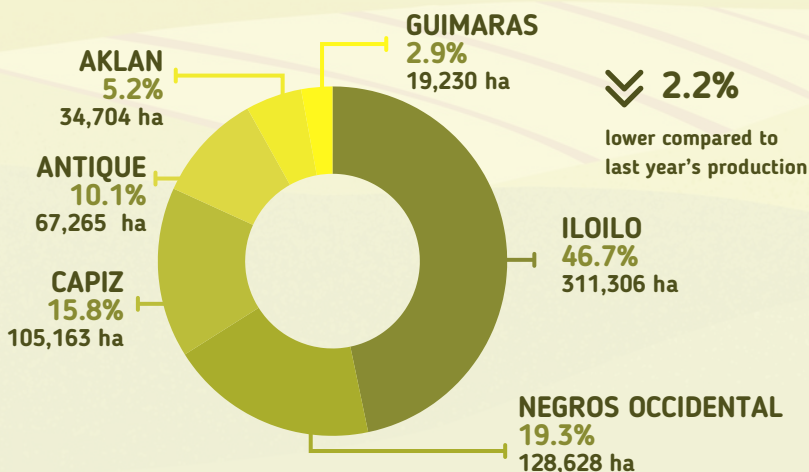
Provincial Share to Regional Palay Production, 2023



Total Area Harvested, by Type of Ecosystem, 2023



Total Area Harvested, by Province, 2023



Production - refers to the quantity produced and actually harvested of crop during the reference period. Estimates were taken from the Palay Production Survey.

Area harvested - refers to the total area harvested to palay during the reference quarter. It may be less than or equal to the total area planted to palay.

Irrigated - area with irrigation facilities supplying water through artificial means like gravity, force/power, pump, etc.

Rainfed - the area holds standing water but solely dependent on rainfall for its water supply.