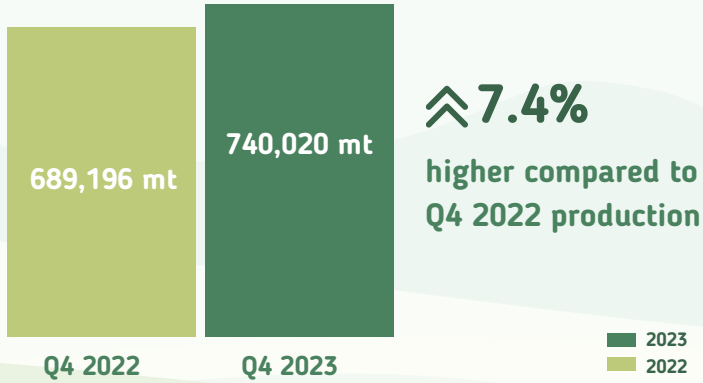


### Volume of Production, 4th Quarter, 2022 to 2023



### Total Palay Production, by Type of Ecosystem, 4th Quarter, 2022 to 2023

#### IRRIGATED

↑ 14.8%

Q4 2023: 358,553 mt  
Q4 2022: 312,366 mt

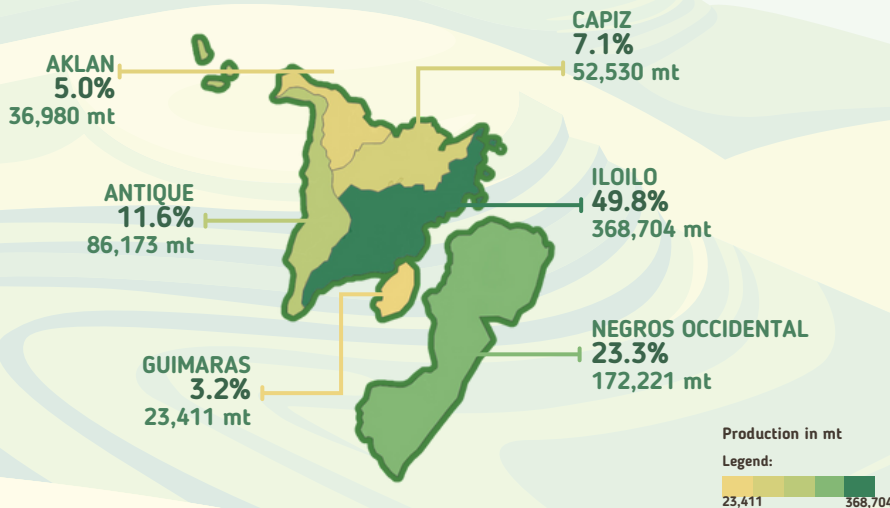


#### RAINFED

↑ 1.2%

Q4 2023: 381,466 mt  
Q4 2022: 376,831 mt

### Provincial Share to Regional Palay Production, 4th Quarter 2023



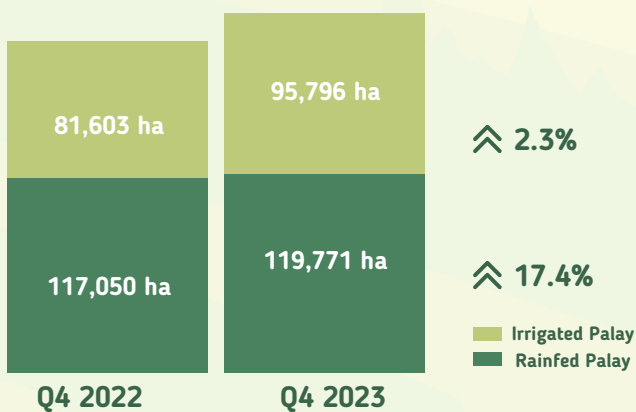
**Production** - refers to the quantity produced and actually harvested of crop during the reference period. Estimates were taken from the Palay Production Survey.

**Area harvested** - refers to the total area harvested to palay during the reference quarter. It may be less than or equal to the total area planted to palay.

**Irrigated** - area with irrigation facilities supplying water through artificial means like gravity, force/power, pump, etc.

**Rainfed** - the area holds standing water but solely dependent on rainfall for its water supply.

### Total Area Harvested, by Type of Ecosystem, 2022 to 2023



### Total Area Harvested, by Province, 2023

