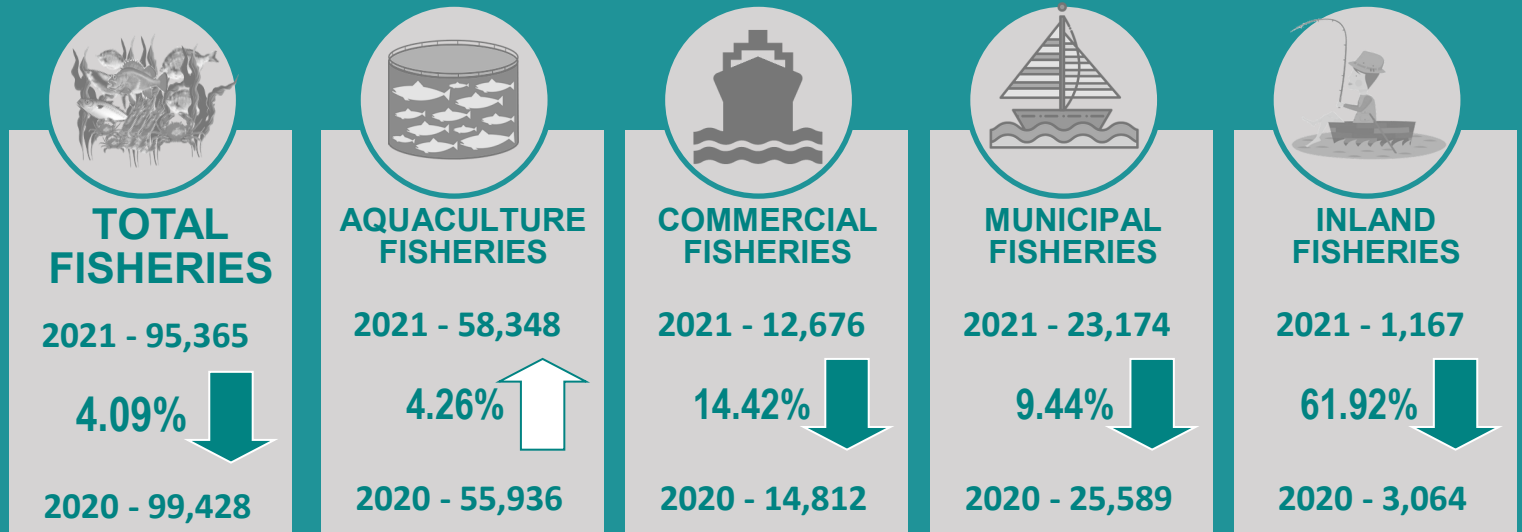
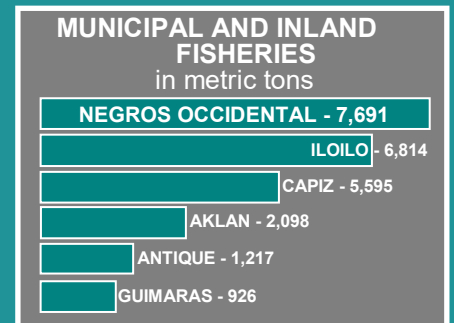
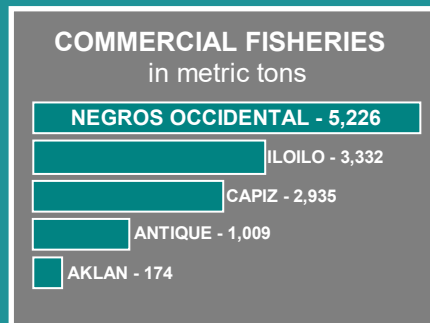
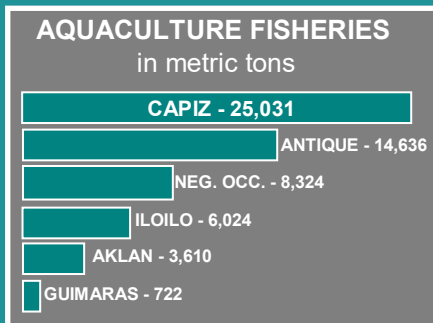




VOLUME OF PRODUCTION (in MT) and GROWTH RATES (3RD QUARTER 2020 - 2021)



VOLUME OF PRODUCTION BY SECTOR AND BY PROVINCE

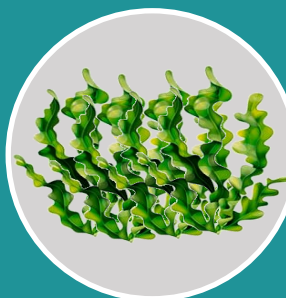


TOP 5 SPECIES BY VOLUME OF PRODUCTION



37,013 MT
Milkfish

Aquaculture - covers operations involving all forms of raising and culturing fish and other fishery species in marine, brackish and freshwater under controlled conditions



14,631 MT
Seaweeds

Commercial - cover fishing operations that make use of boats of more than three gross tons



4,635 MT
Oyster

Marine Municipal - covers fishing operations carried out without the use of boat or the use of a boat of three (3) gross tons or less



2,294 MT
Bali Sardinella



2,281 MT
Crevalle

Inland Municipal - catching of fish, crustaceans, mollusks and all other aquatic animals and plants in inland water like lakes, rivers, dams, marshes, etc.

