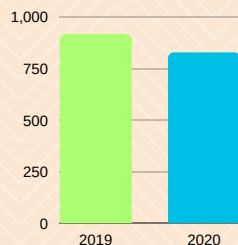




# 2020 WESTERN VISAYAS GROSS REGIONAL DOMESTIC EXPENDITURE



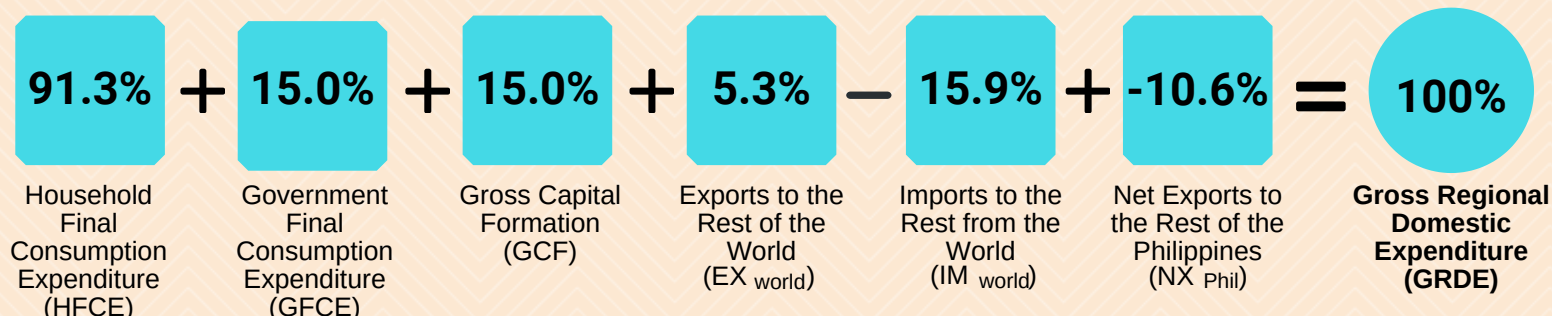
Gross Regional Domestic Expenditure (GRDE) is the expenditure of residents of the region in the domestic territory plus their expenditures in other regions including the rest of the world.



The economy of Western Visayas shrunk by **9.7%** in 2020, from the 6.3% growth posted in 2019

Of the -9.7% growth, GFCE contributed 1.0 percentage points and Net Exports with 2.2 percentage points. This, however, was pulled down by HFCE by -7.6 percentage points, followed by GCF with -5.3 percentage points.

## 2020 Share of Expenditure Items to the Regional Economy, at constant 2018 prices

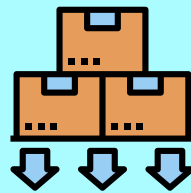


## Growth Rates of Expenditure Items, at constant 2018 prices



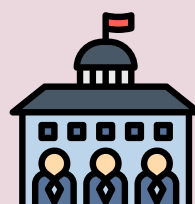
### Household Final Consumption Expenditure (HFCE)

contracted to **-8.5%** (2019-2020) from 5.4% (2018-2019)



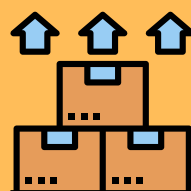
### Exports of Goods and Services to the Rest of the World

contracted to **-38.8%** (2019-2020) from 4.7% (2018-2019)



### Government Final Consumption Expenditure (GFCE)

accelerated to **8.1%** (2019-2020) from 7.5% (2018-2019)



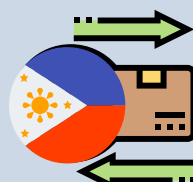
### Imports of Goods and Services from the Rest of the World

decelerated to **-17.5%** (2019-2020) from -7.0% (2018-2019)



### Gross Capital Formation (GCF)

contracted to **-28.0%** (2019-2020) from 10.3% (2018-2019)



### Net Exports to the Rest of the Philippines

contracted to **-18.3%** (2019-2020) from 34.2% (2018-2019)

