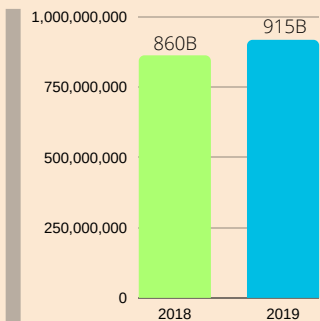




# 2019 WESTERN VISAYAS GROSS REGIONAL DOMESTIC EXPENDITURE



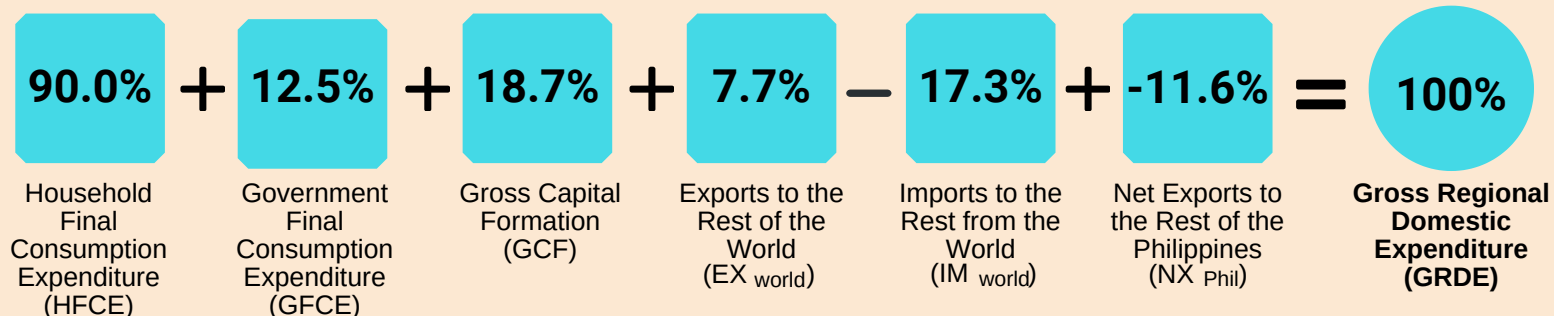
Gross Regional Domestic Expenditure (GRDE) is the expenditure of residents of the region in the domestic territory plus their expenditures in other regions including the rest of the world.



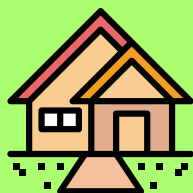
The economy of Western Visayas grew by **6.4%** in 2019, faster than the 4.8% growth in 2018.

Of the 6.4% growth, HFCE contributed 4.9 percentage points, followed by GCF with 1.8 percentage points and GFCE with 1.0 percentage point. This, however, was pulled down by Net Exports by 1.3 percentage points.

## 2019 Share of Expenditure Items to the Regional Economy, at constant 2018 prices

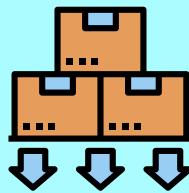


## Growth Rates of Expenditure Items, at constant 2018 prices



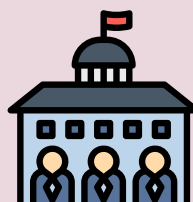
### Household Final Consumption Expenditure (HFCE)

decelerated to 5.4% (2018-2019) from 5.6% (2017-2018)



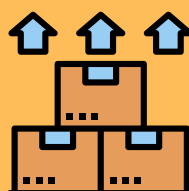
### Exports of Goods and Services to the Rest of the World

rebounded to 4.4% (2018-2019) from -3.7% (2017-2018)



### Government Final Consumption Expenditure (GFCE)

decelerated to 8.0% (2018-2019) from 19.3% (2017-2018)



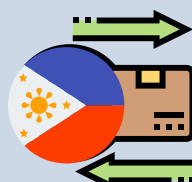
### Imports of Goods and Services from the Rest of the World

contracted to -7.4% (2018-2019) from 38.2% (2017-2018)



### Gross Capital Formation (GCF)

decelerated to 9.8% (2018-2019) from 39.4% (2017-2018)



### Net Exports to the Rest of the Philippines

accelerated to 32.9% (2018-2019) from 20.1% (2017-2018)